

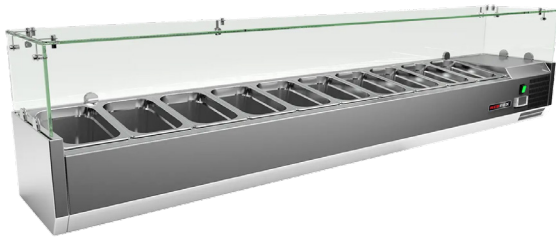
# Technical data sheet



## Product features

### Cooling display 10 x GN 1/4

<b>Model</b>	<b>SAP Code</b>	00013361
MCH 4200	<b>A group of articles - web</b>	Cooling and freezing tables



- Material: Stainless steel
- GN / EN size in device: GN 1/4
- Number of GN / EN: 10
- Control type: Digital
- Minimum device temperature [°C]: 2
- Maximum device temperature [°C]: 8
- Insulation thickness [mm]: 40
- Unit: Right
- Automatic defrost: Yes

<b>SAP Code</b>	00013361	<b>Number of GN / EN</b>	10
<b>Net Width [mm]</b>	2000	<b>GN / EN size in device</b>	GN 1/4
<b>Net Depth [mm]</b>	335	<b>GN device depth</b>	150
<b>Net Height [mm]</b>	440	<b>Minimum device temperature [°C]</b>	2
<b>Net Weight [kg]</b>	57.00	<b>Maximum device temperature [°C]</b>	8
<b>Power electric [kW]</b>	0.180	<b>Refrigerant</b>	R290
<b>Loading</b>	230 V / 1N - 50 Hz	<b>Refrigerant weight [g]</b>	38.00
<b>Chamber volume [l]</b>	62	<b>Climate class</b>	4

# Technical data sheet

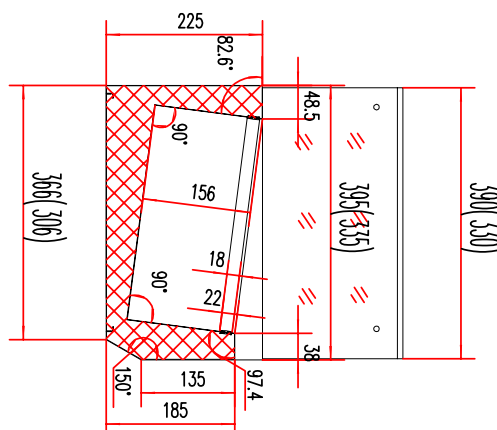
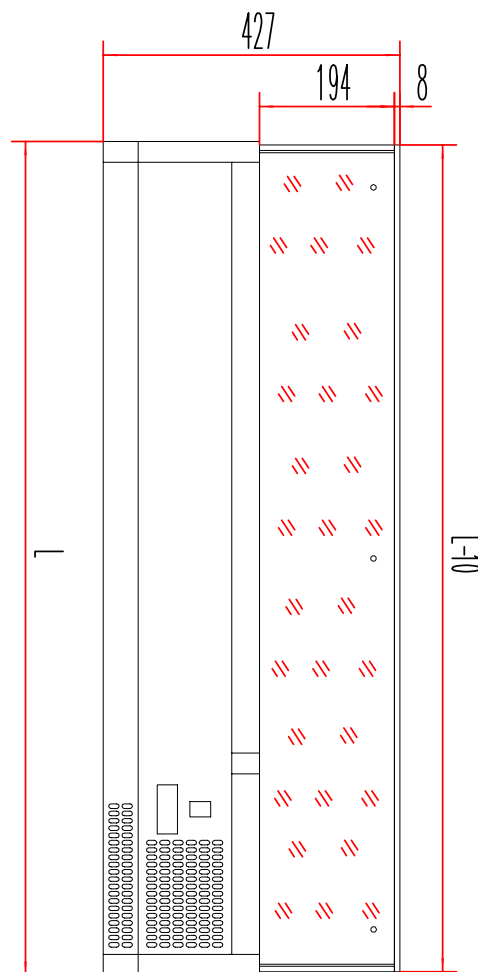


Technical drawing

## Cooling display 10 x GN 1/4

<b>Model</b>	<b>SAP Code</b>	00013361
MCH 4200	<b>A group of articles - web</b>	Cooling and freezing tables

MCH3120/MCH4120	1200	2000
MCH3140/MCH4140	1400	2000
MCH3150/MCH4150	1500	2000
MCH3160/MCH4160	1600	2000
MCH3180/MCH4180	1800	2000
MCH4200	2000	2000



# Technical data sheet



## Technical parameters

### Cooling display 10 x GN 1/4

<b>Model</b>	<b>SAP Code</b>	00013361
MCH 4200	<b>A group of articles - web</b>	Cooling and freezing tables

**1. SAP Code:**

00013361

**2. Net Width [mm]:**

2000

**3. Net Depth [mm]:**

335

**4. Net Height [mm]:**

440

**5. Net Weight [kg]:**

57.00

**6. Gross Width [mm]:**

2090

**7. Gross depth [mm]:**

375

**8. Gross Height [mm]:**

310

**9. Gross Weight [kg]:**

67.00

**10. Device type:**

Electric unit

**11. Power electric [kW]:**

0.180

**12. Loading:**

230 V / 1N - 50 Hz

**13. Refrigerant:**

R290

**14. Cooling type:**

Static

**15. Material:**

Stainless steel

**16. Exterior color of the device:**

Stainless steel

**17. Additional information:**

GN are not included

**18. Device properties 2:**

Cooling

**19. GN / EN size in device:**

GN 1/4

**20. Number of internal parts:**

10

**21. Number of GN / EN:**

10

**22. GN device depth:**

150

**23. Chamber volume [l]:**

62

**24. Pizza design:**

Yes

**25. Insulation thickness [mm]:**

40

**26. Unit:**

Right

**27. Control type:**

Digital

**28. Minimum device temperature [°C]:**

2

# Technical data sheet



Technical parameters

## Cooling display 10 x GN 1/4

<b>Model</b>	<b>SAP Code</b>	00013361
MCH 4200	<b>A group of articles - web</b>	Cooling and freezing tables

**29. Maximum device temperature [°C]:**

8

**33. Net Volume [m3]:**

0.295

**30. Automatic defrost:**

Yes

**34. Climate class:**

4

**31. Refrigerant weight [g]:**

38.00

**35. Cross-section of conductors CU [mm²]:**

0,5

**32. Gross Volume [m3]:**

0.243